



DUFOUR

YACHTS

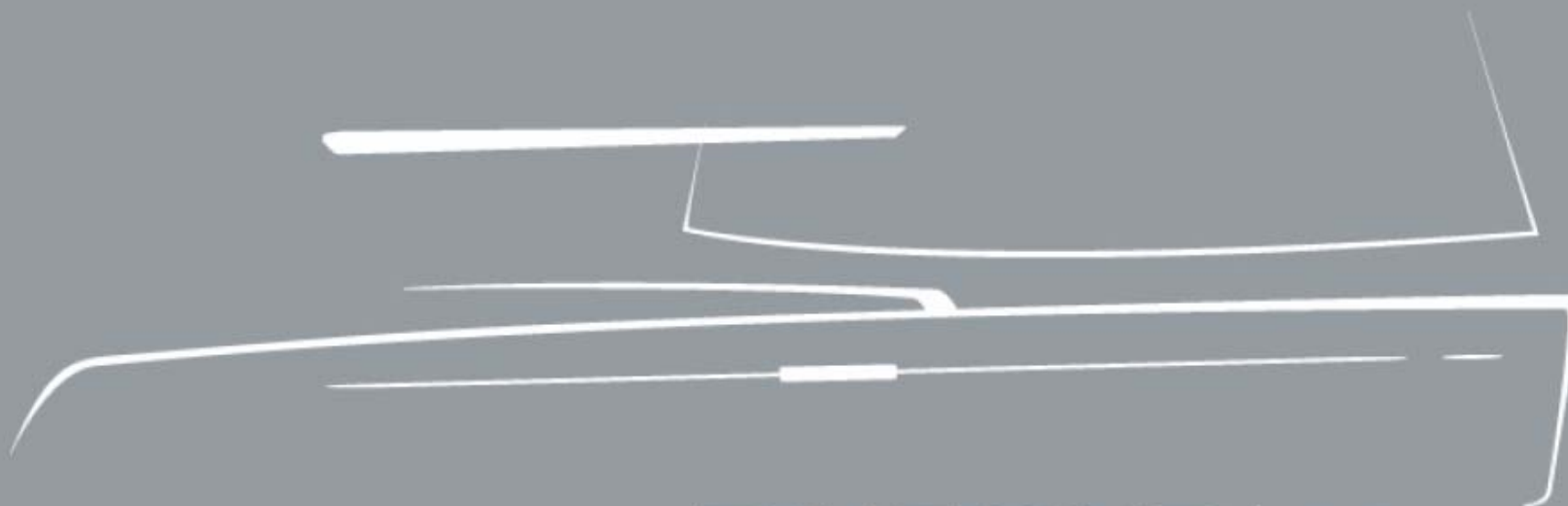
The Ultimate Sailing Pleasure



N
o
u
v
e
a
u
t
é
2
0
0
8
-
N
e
w
2
0
0
8

PRESS RELEASE

New DUFOUR 45 Performance



DUFOUR | 45
Performance

Le Digne Héritier de la Gamme Performance...
The Worthy Heir of the Performance Range...



PREFACE

The latest born of the Performance Signature of Dufour Yachts, the **Dufour 45** *Performance* will make her first appearance at the international boats shows in Autumn 2008: Ijmuiden, Cannes, Southampton, Grand Pavois, Genoa, Barcelona...

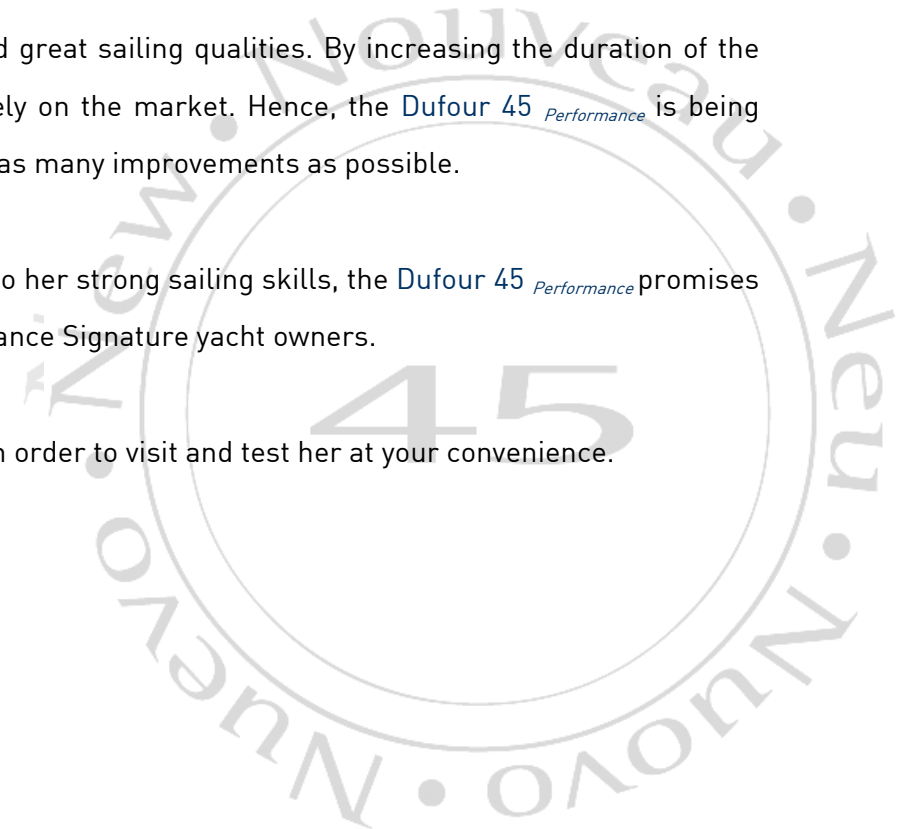
Once again, Dufour Yachts will impress passionate sailors with a powerful sailing boat, designed for fast cruising. Indeed, known for its impressive palmares, the Performance Signature will make people speak about it again with the launch of this new 45 footer.

First tested in La Rochelle a couple of weeks ago, the proto-type already revealed great sailing qualities. By increasing the duration of the testing period, Dufour strives for perfection before launching the model definitively on the market. Hence, the **Dufour 45** *Performance* is being launched at the best period of time, after extensive tests by our engineers and with as many improvements as possible.

With her modern and stylish lines, characteristic for the Dufour brand, and thanks to her strong sailing skills, the **Dufour 45** *Performance* promises to offer all the pleasures and feelings so highly appreciated by the current Performance Signature yacht owners.

It is a real pleasure to invite you on board before the official launch on boat shows in order to visit and test her at your convenience.

The Dufour Marketing team



DUFOUR | 45

Performance

SYNOPSIS

- I/ General Presentation
- II/ Main Characteristics
- III/ Concept & design
- IV/ Versions
- V/ Life aboard
- VI/ Deck Layout
- VII/ Technical Information





// GENERAL PRESENTATION

... The worthy heir of the Dufour Spirit

The new Dufour 45 *Performance* has a modern look, thanks to her sleek hull lines. She has got the typical characteristics of the Dufour Performance Signature, is definitely designed for fast cruising and also offers all the advantages of a comfortable and spacious sailing yacht.





II/ MAIN CHARACTERISTICS



Architects.....	Umberto Felci	
.....	Patrick Roséo	
LOA.....	13,95 m	45'76"
Hull length.....	13,60 m	44'61"
LWL.....	12,16 m	39'89"
Beam.....	4,30 m	14'10"
Displacement		
- Standard keel.....	10 870 kg	23.964 lbs
- Long keel.....	10 640 kg	23.457 lbs
Draft		
- Standard keel.....	1,95 m	6'39"
- Long keel.....	2,30 m	7'54"
Keel weight		
- Standard keel.....	3 330 kg	7.341 lbs
- Long keel.....	3 100 kg	6.834 lbs
Sail area.....	113 m ²	1217 sq ft
Standard engine.....	55 CV	55 HP



III/ CONCEPT & DESIGN (1)

Design Philosophy...

The new Dufour 45 *Performance* has been developed after a detailed analysis of what historically made the success of the Performance Signature.

Indeed, other than just being an upgraded Dufour 44, this new model introduces also a new era in the Performance Signature.

Designed by Umberto Felci, internationally known for the performance and evolving style of his yachts, and well known interior designer Patrick Roseo, the Dufour 45 *Performance* is in essence what Performance Signature is all about: a “contemporary classic”, with values like performance, elegance, and ease of use, with a strong link to the tradition and perceived quality all translated in our design:

- Typical and highly recognisable Dufour styling
- Plumb Bow
- Extended water line
- Classic shape coachroof portlights with modern style finish
- Hull portholes in Dufour style
- Uncluttered foredeck and coachroof for safe circulation

The Dufour 45 *Performance* will be the reference model for all sailors especially for those who already crossed the ocean on the Dufour 44 and who are willing to evolve towards higher contemporary classicism and performance.

‘The contemporary classic’



III/ CONCEPT & DESIGN (2)

- ✔ Built with innovative techniques, i.e. injection moulded deck
- ✔ A cruising boat with space and comfort, developed for pure and fast cruising
- ✔ Stylish, with elegant deck and hull lines
- ✔ An innovative and original cockpit layout that is both spacious and comfortable
- ✔ Attention to detail:



'The contemporary classic'

IV/ VERSIONS (1)

One boat, 2 programs...

- CLUB Version - 207 000€ Ex VAT
Standard rigg
PTE keel (1,95m)
Mosquito screens
Radio CD player with 2 speakers
Holding tank for 1 toilet
220V shore power + outlets in cabins and saloon
Battery charger +120 amph current generator for Volvo engine



Standard mast
PTE keel

DUFOUR | 45

performance

IV/ VERSIONS (2)

FASTNET

- FASTNET Version – 228 000€ Ex VAT
Long mast (3 pairs of spreaders)
GTE keel (2.30 m)
Folding propeller
Black, leather covered Fastnet steering wheels in carbon (winter 2008)
Dyform standing rigging
Adjustable Genoa lead cars
Running rigging in Dyneema
Performance symmetrical Spinnaker gear with aluminium pole
Set of winches 48STA for spinnaker sheet and German mainsheet system
"German mainsheet system"
Mosquito screens
Radio CD player with 2 speakers
Holding tank for 1 toilet
220V shore power + outlets in cabins and saloon
Battery charger + 120 amp current generator for Volvo engine



Long mast
GTE keel



Platinum Pack – 12 000€ Ex VAT

Cockpit floor, roof and bathing platform in Teak/Iroko FSC
Dufour Yachts Crockery set
Floorboards in Wenge
Electric windlass 1400 W
Deck light
Blue saloon lighting near floor
3 burner cooker
Cockpit portlight in aft cabin
Extra service batteries 2 x 100 Amph
VHF loudspeaker in cockpit
Cockpit shower (cold/hot)
12V outlet in cockpit for inspection light
2 loudspeakers in cockpit for radio/CD
Folding saloon table with storage locker



DUFOUR | 45

Performance



V/ LIFE ABOARD

- ✔ A warm marine style interior with a very functional layout
- ✔ Modern design elements: saloon and chart table, Galley configuration, position and number of storage lockers



3 cabin version:



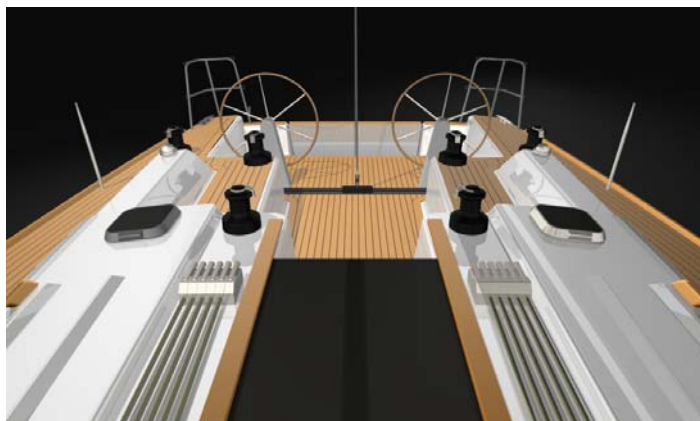
4 cabin version:





VI/ DECK LAYOUT (1)

- ✔ An appealing, elegant and dynamic look
- ✔ New style teak roof
- ✔ Large side-decks and an uncluttered deck for easy and safe circulation onboard especially for regatta
- ✔ A double steering wheel system
- ✔ An astute and usefull opening aft deck





VI/ DECK LAYOUT (2)



PERFORMANCE

- Sleek hull lines
- Instruments on coaming ends



SPACE

- Large side-decks
- Double steering wheel
- New winch configuration
- Transom door
- Under deck furling drum
- Recess for cockpit table



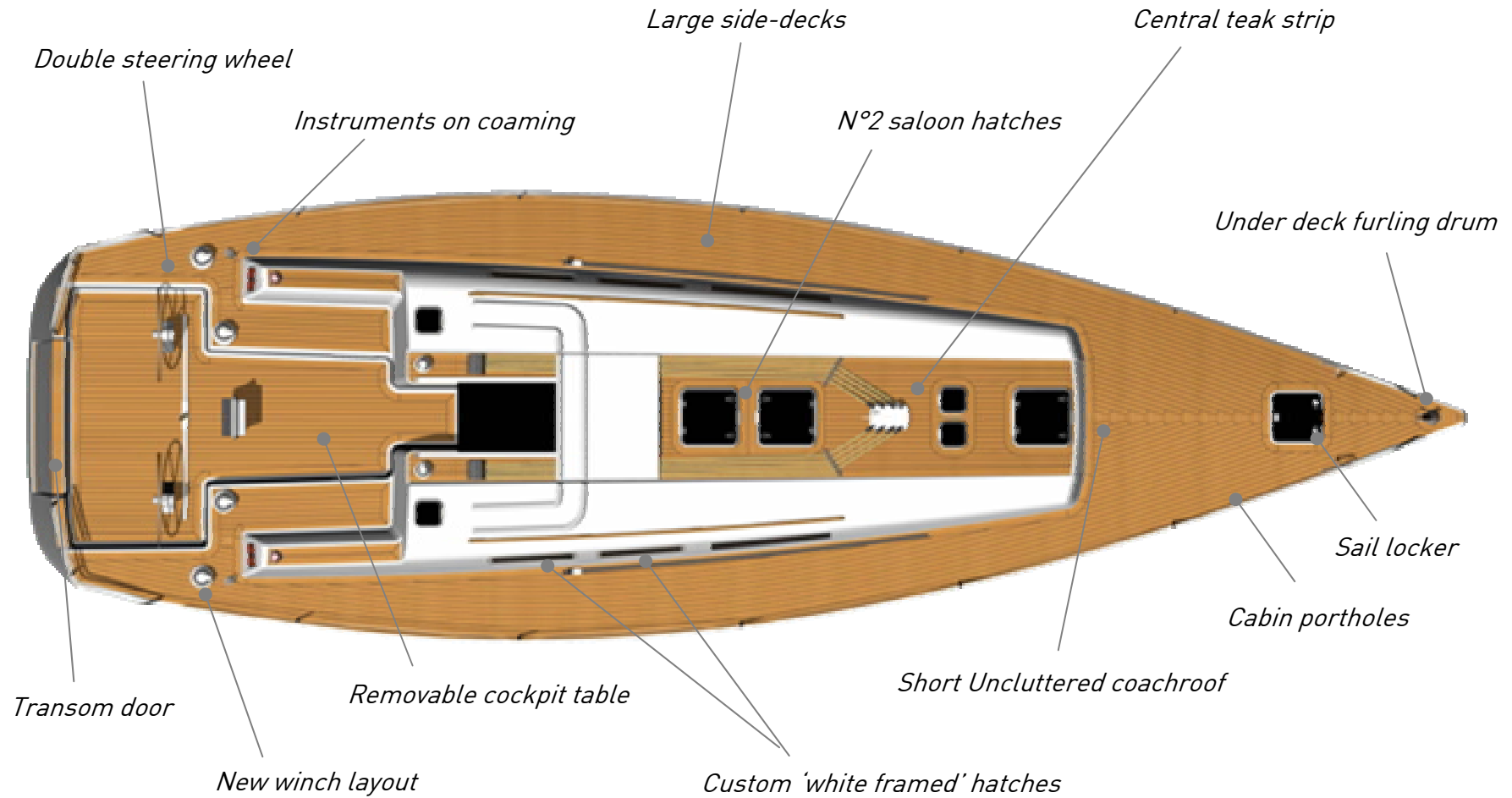
IDENTITY

- Short uncluttered coachroof
- Central strip of teak on the roof (optional)
- Owner cabin portholes
- 'White framed custom hatches
- N°2 hatches over saloon
- Characteristic Dufour bow roller





VI/ DECK LAYOUT (3)

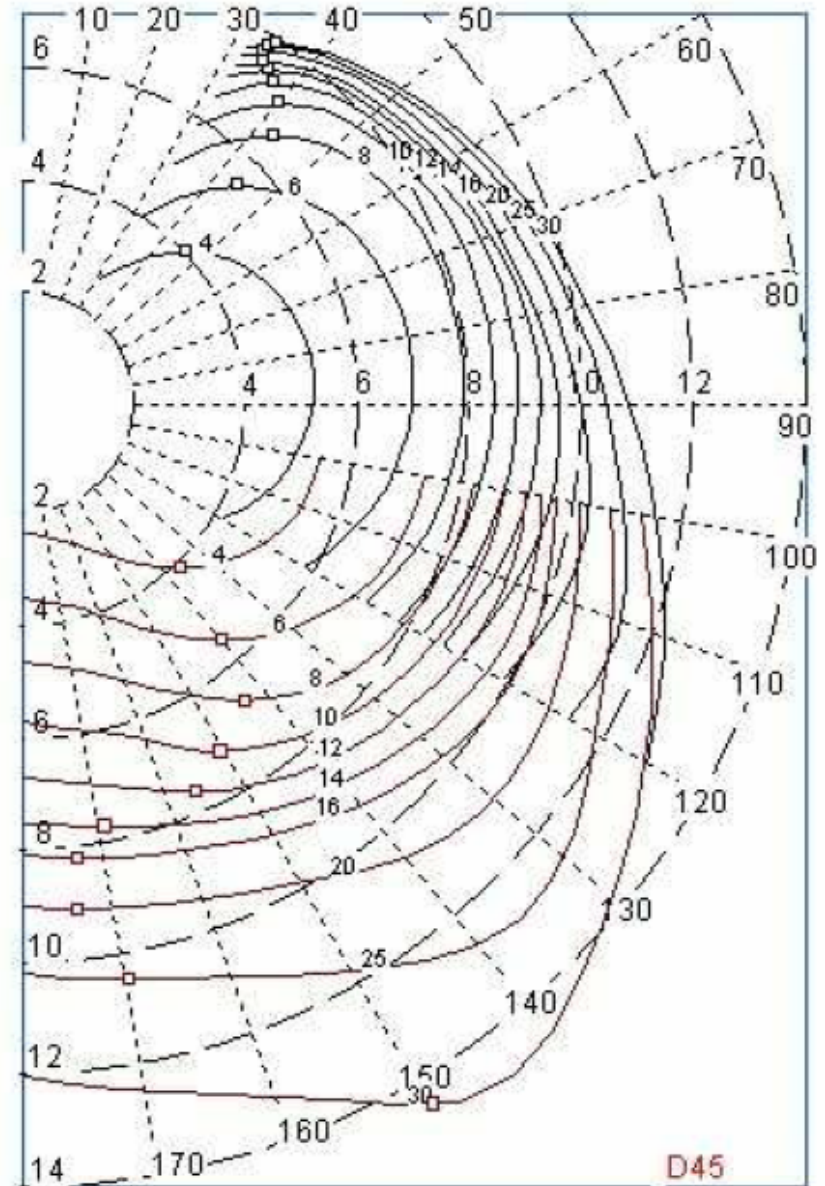




VI/ TECHNICAL INFORMATION (1)

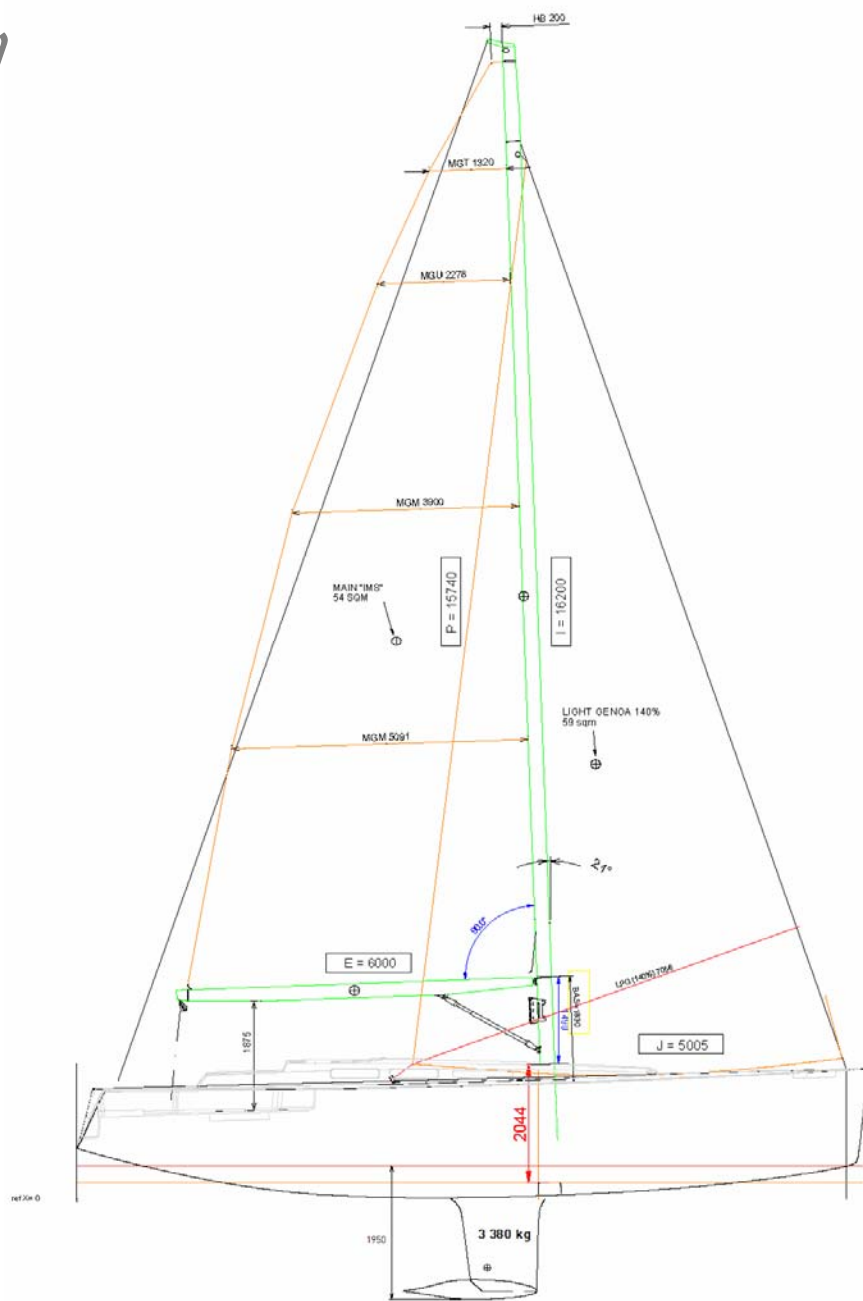
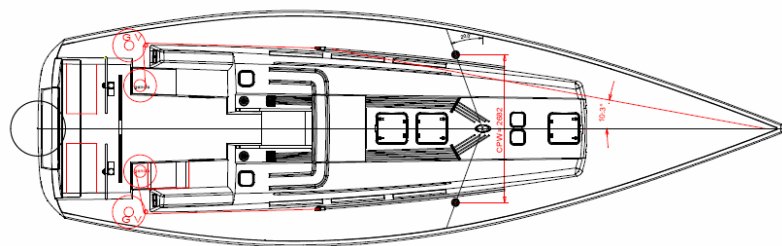
- Polar Diagram -

This is a typical polar diagram which shows the boat speed for specific true wind speed and heading. The radial lines represent true wind heading and the circumferential lines represent true wind speed. Optimal upwind and downwind conditions are marked as small square on the boat speed contours for each wind speed.



VI/ TECHNICAL INFORMATION (2)

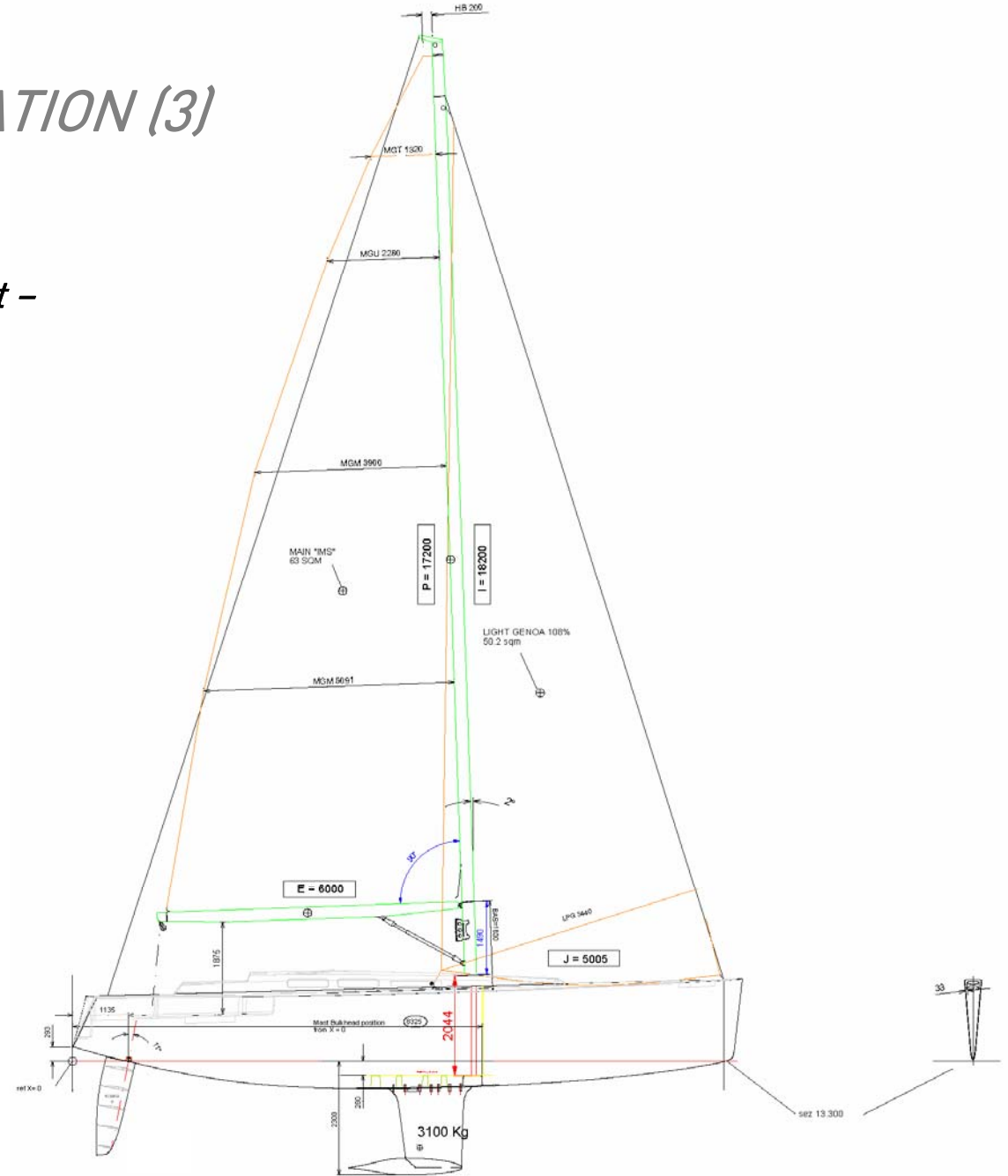
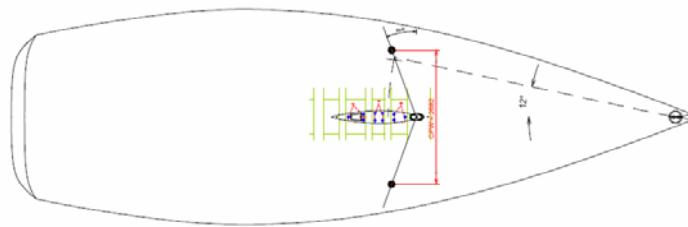
- *Sail plan for standard 2 pairs of spreaders mast –*





VI/ TECHNICAL INFORMATION (3)

- *Sail plan for 3 pairs of spreaders mast* -



DUFOUR

YACHTS

The Ultimate Sailing Pleasure



The Dufour Team at your service

Do not hesitate to contact us :

Paul WUYTS

paul.wuyts@dufour-yachts.com

Jules MAZARS

Press sailing test

jules.mazars@dufour-yachts.com

Elodie Verdan

Marketing – Communication

elodie.verdan@dufour-yachts.com

*Download high definition pictures for each model via www.dufour-yachts.com
Click Press and get access to a wide choice of picture material*



RÉSEAU INTERNATIONAL DUFOUR DISPONIBLE SUR
INTERNATIONAL DEALER NETWORK AVAILABLE ON
www.dufouryachts.com

DUFOUR
YACHTS
The Ultimate Sailing Pleasure

Les descriptions, illustrations, etc. sont données à titre indicatif. Nos modèles peuvent subir certaines modifications ou améliorations de série sans préavis.
The descriptions, illustrations, etc. given are for information only. Our models may be subject to certain production requirements or modifications at that no time.